



**HUOT SRY TRADE & CONSTRUCTION CO., LTD.**

# Monthly Report May -2023

**TRANSMISSION LINE 500KV  
LAO BORDER TO P. PENH SS**

**PREPARED BY : SEN RINETH  
SITE SURVEYOR**

Address: P151, St Pleasure, Sangkat Toeuk Thla, Khan Sensok, PhnomPenh, Cambodia  
Contact number: (+855)81 700 927, Company's Website: huotsry.com  
Email Address: huotsry@gmail.com

# PROJECT PROGRESS REPORT

PROJECT: PCL 17

---

**1. SUMMARY OF CONSTRUCTION PROGRESS AS OF MAY 2023 LAOS BORDER TO PNH SS  
TRANSMISSION LINE 500KV.**

---

<b>PROJECT PROGRESS</b>
<b>1. Pad and Chimney Foundation</b>
<b>2. Trees Cutting</b>
<b>OVERALL PROJECT</b>

---

## LIST OF MANPOWER

---

DESCRIPTION
1. Site Manager
2. Safety Officer
3. Stock Keeper
4. Foreman
5. Surveyor
6. Excavator Driver
7. Concrete Mixer Truck Driver
8. Hamer Driver
9. Truck Driver
10. Trailer Driver
11. Worker

---

## LIST OF MACHINERY

---

DESCRIPTION
1. Concrete Vibrating
2. Steel Cutting Machine
3. Steel Bending Machine
4. Steel Cutting Motor
5. Welding Machine
6. Container Office and Stock
7. Generator (High Capacity)
8. Small generator
9. Concrete Mixing Machine
10. Concrete Mixing Truck
11. Excavator
12. Hammer Truck
13. Trailer
14. Cambodia Truck
15. Tractors
16. Wheel loader
17. Bored pile drilling machine
18. Compactor machine mini
19. Car
20. Total Station (Sokkia)
21. Auto Level (Sokkia)

# 1. Pad and Chimney Foundation T302.



Lean concrete leg B



Lean concrete leg C



Lean concrete leg B



Lean concrete leg C



Lean concrete leg B



Lean concrete leg C

# 1. Pad and Chimney Foundation T302.



Base concrete leg B



Base concrete leg C



Base concrete leg B



Base concrete leg C



Base concrete leg B



Base concrete leg C

# 1. Pad and Chimney Foundation T302.



Chimney concrete leg B



Chimney concrete leg D



Chimney concrete leg B



Chimney concrete leg D



Chimney concrete leg B



Chimney concrete leg D

# 1. Pad and Chimney Foundation T302.



Backfill leg B, D



Backfill leg A, D



Backfill leg B, D



Backfill leg A



Remove chimney form box leg C



Backfill leg C

# 1. Pad and Chimney Foundation T307.



Lean concrete leg D



Lean concrete leg A



Lean concrete leg D



Lean concrete leg A



Lean concrete leg D



Base rebar & formwork installation leg D.

# 1. Pad and Chimney Foundation T307.



Base concrete leg D.



Base concrete leg A.



Base concrete leg D.



Base concrete leg A.



Base concrete leg D.



Base concrete leg A.

# 1. Pad and Chimney Foundation T307.



Chimney concrete leg D



Chimney concrete leg A



Chimney concrete leg D



Chimney concrete leg A



Chimney concrete leg D



Chimney concrete leg A

# 1. Pad and Chimney Foundation T307.



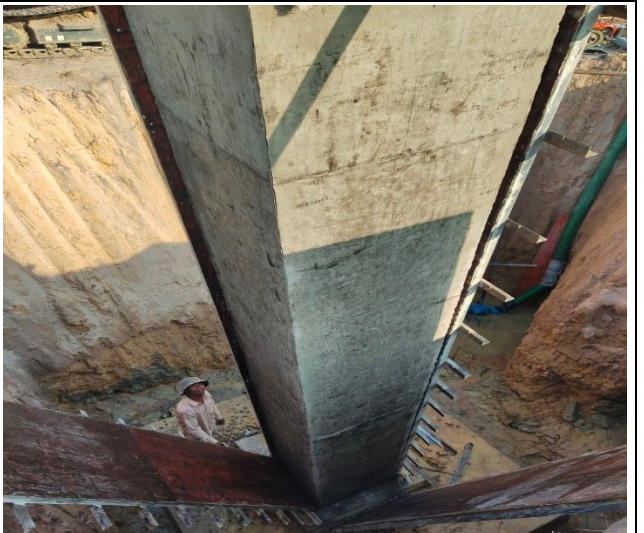
Backfill leg B, C



Remove chimney form box leg D



Backfill leg B, C



Remove chimney form box leg D



Backfill leg B, C



Remove chimney form box leg A

# 1. Pad and Chimney Foundation T307.



Backfill leg D



Backfill leg A



Backfill leg D



Backfill leg A



Backfill leg D



Backfill leg A

# 1. Pad and Chimney Foundation T308.



Lean concrete leg B



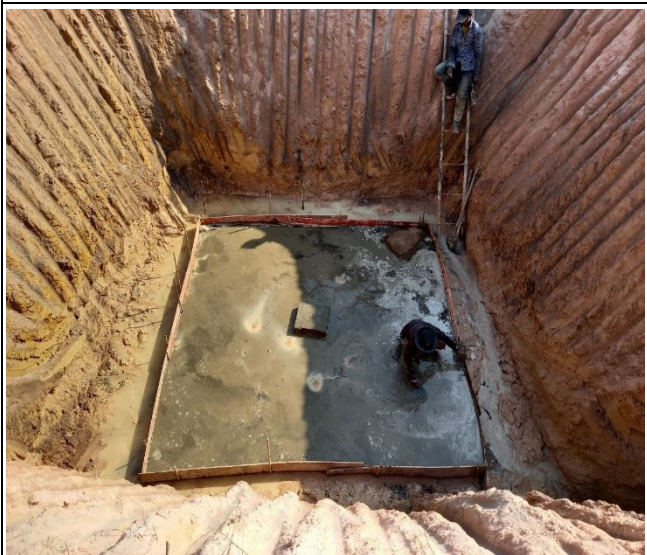
Lean concrete leg A



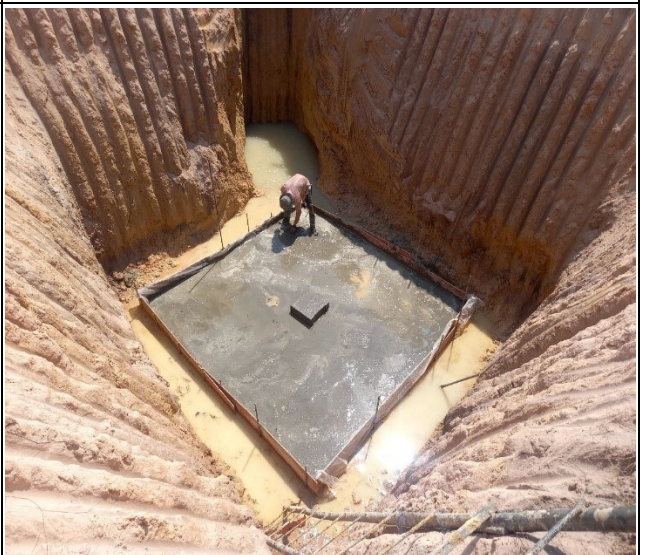
Lean concrete leg B



Lean concrete leg A



Lean concrete leg B



Lean concrete leg A

# 1. Pad and Chimney Foundation T308.



Lean concrete leg B



Base formwork installation leg B



Base rebar installation leg B



Slump teste for casting base leg B



Base rebar & formwork installation leg B



Base casting concrete leg B

# 1. Pad and Chimney Foundation T308.



Stub setting leg A



Base casting concrete leg A



Base rebar installation leg A



Base casting concrete leg A



Base rebar & formwork installation leg A



Base casting concrete leg A

# 1. Pad and Chimney Foundation T309.



Lean concrete leg C



Stub setting leg C



Lean concrete leg C



Base rebar & formwork installation leg C



Lean concrete leg C



Base rebar & formwork installation leg C

# 1. Pad and Chimney Foundation T309.



Lean concrete leg B



Stub setting leg C



Lean concrete leg B



Base rebar installation leg C



Lean concrete leg B



formwork installation leg C

# 1. Pad and Chimney Foundation T309.



Slump teste leg C



Stub setting leg B



Base concrete leg C



Base rebar installation leg B



Base concrete leg C



Base rebar installation leg B

# 1. Pad and Chimney Foundation T309.



Base concrete leg B



Stub setting leg C



Base concrete leg B



Chimney concrete leg C



Base concrete leg B



Chimney concrete leg C

# 1. Pad and Chimney Foundation T309.



Slump testing leg D



Base rebar & formwork installation leg A



Chimney concrete leg D



Base concrete leg A



Chimney concrete leg D



Base concrete leg A

# 1. Pad and Chimney Foundation T309.



Slump testing leg A



Remove chimney form box leg A



Chimney concrete leg A



Remove chimney form box leg A



Chimney concrete leg A



Remove chimney form box leg A

# 1. Pad and Chimney Foundation T267.



Lean concrete leg C



Lean concrete leg C



Lean concrete leg C



Lean concrete leg C



Lean concrete leg D



Lean concrete leg D

# 1. Pad and Chimney Foundation T267.



Lean concrete leg D



Lean concrete leg D



Lean concrete leg A



Lean concrete leg A



Lean concrete leg A



Lean concrete leg A

# 1.Chimney Foundation Work. T267



Slump testing leg D



Chimney concrete leg D



Chimney concrete leg D



Slump testing leg A



Chimney concrete leg A



Chimney concrete leg A

# 1.Remove Chimney Foundation Work. T267



Remove form box leg B



Saturday, May 20, 2023 2:59:08 PM  
12.5216N 105.2060E  
Unnamed Road  
Baray  
Kampong Thom Province

Remove form box leg B



Remove form box leg C



Remove form box leg C



Remove form box leg D



Chimney concrete leg D

# 1. Pad and Chimney Foundation T268.



Base concrete leg B



Base concrete leg B



Stub setting leg C



Rebar installation leg C



Base concrete leg C



Base concrete leg C

# 1. Pad and Chimney Foundation T268.



Stub setting leg A



Base concrete leg A



Base concrete leg A



Base concrete leg A



Stub setting leg D



Base concrete leg D

# 1. Chimney Foundation Work T268.



Slump testing leg A



Chimney concrete leg A



Chimney concrete leg A



Slump testing leg D



Chimney concrete leg D



Chimney concrete leg D

# 1. Remove Chimney Foundation Work T268.



Remove form box leg B



Remove form box leg B



Remove form box leg C



Remove form box leg C



Chimney concrete leg A



Chimney concrete leg A

## 2.Tree Cutting Work T302, T303.



Tree cutting



Tree cutting



Tree cutting



Tree cutting



Tree cutting



Tree cutting

## 2.Tree Cutting Work T306, T309.



Tree cutting



Tree cutting



Tree cutting



Tree cutting



Tree cutting



Tree cutting

## 2.Tree Cutting Work T301, T302.



Tree cutting



Tree cutting



Tree cutting



Tree cutting



Tree cutting



Tree cutting

## 2.Tree Cutting Work T309, T310.



Tree cutting



Tree cutting



Tree cutting



Tree cutting



Tree cutting



Tree cutting

## 2.Tree Cutting Work T300, T301.



Tree cutting



Tree cutting



Tree cutting



Tree cutting



Tree cutting



Tree cutting

## 2.Tree Cutting Work T299, T300.



Tree cutting



Tree cutting



Tree cutting



Tree cutting



Tree cutting



Tree cutting

## 2.Tree Cutting Work T298, T299.



Tree cutting



Tree cutting



Tree cutting



Tree cutting



Tree cutting



Tree cutting

## 2.Tree Cutting Work T297, T298.



Tree cutting



Tree cutting



Tree cutting



Tree cutting



Tree cutting



Tree cutting

## 2.Tree Cutting Work T296, T297.



Tree cutting



Tree cutting



Tree cutting



Tree cutting



Tree cutting



Tree cutting

## 2.Tree Cutting Work T295, T296.



Tree cutting



Tree cutting



Tree cutting



Tree cutting



Tree cutting



Tree cutting

## 2.Tree Cutting Work T294, T295.



Tree cutting



Tree cutting



Tree cutting



Tree cutting



Tree cutting



Tree cutting

## 2.Tree Cutting Work T293, T294.



Tree cutting



Tree cutting



Tree cutting



Tree cutting



Tree cutting



Tree cutting

## 2.Tree Cutting Work T285, T286, T287.



Tree cutting



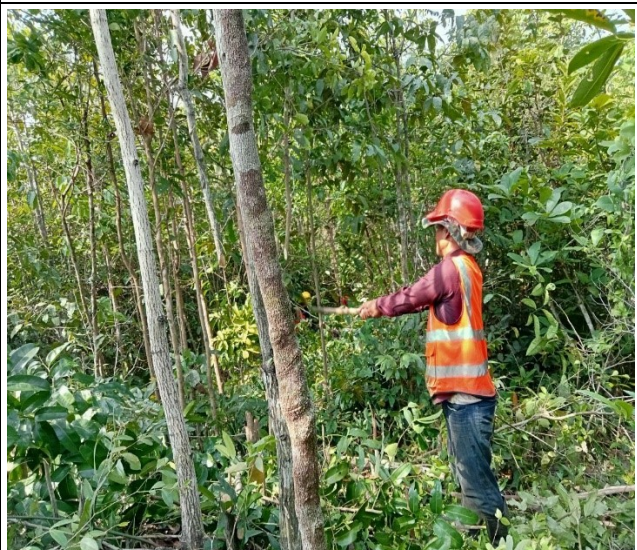
Tree cutting



Tree cutting



Tree cutting



Tree cutting



Tree cutting

## 2.Tree Cutting Work T309, T310, T311.



Tree cutting



Tree cutting



Tree cutting



Tree cutting



Tree cutting



Tree cutting

## 2.Tree Cutting Work T312, T313, T314.



Tree cutting



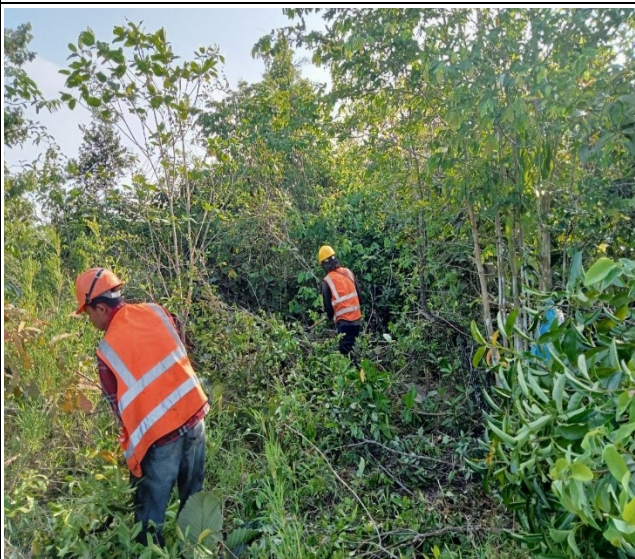
Tree cutting



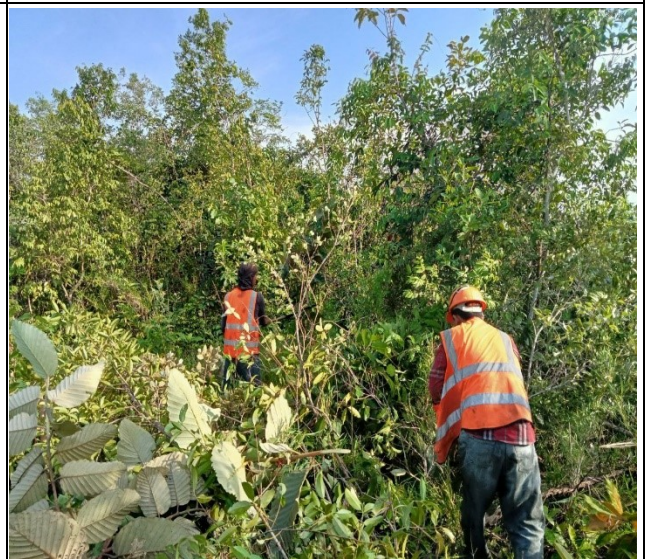
Tree cutting



Tree cutting



Tree cutting



Tree cutting

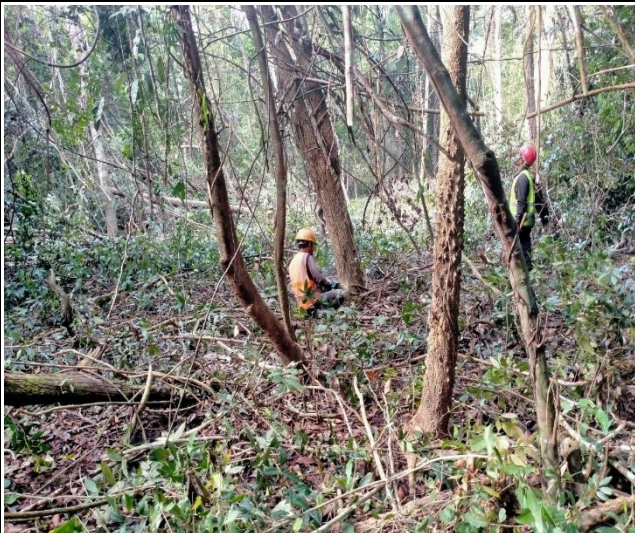
## 2.Tree Cutting Work T534, T535.



Tree cutting



Tree cutting



Tree cutting



Tree cutting



Tree cutting



Tree cutting

## 2.Tree Cutting Work T532, T533.



Tree cutting



Tree cutting



Tree cutting



Tree cutting



Tree cutting



Tree cutting

**THANK YOU!**